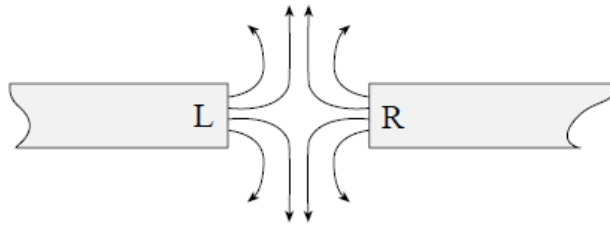


Physics 12 Section 20.1 Daily Review

1. Identify the poles of the magnets shown.



	POLE L	POLE R
A.	North	North
B.	North	South
C.	South	North
D.	South	South

2. A compass placed on a table points north. In which direction should a conductor, placed **directly above** the compass, carry current in order to reverse the direction of the compass needle?
- A. east to west
 - B. west to east
 - C. north to south
 - D. south to north