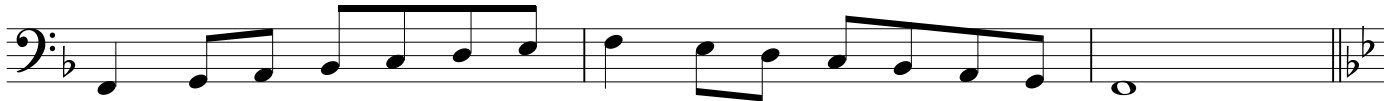


TROMBONE SCALE SHEET

C Major (no flats/sharps)



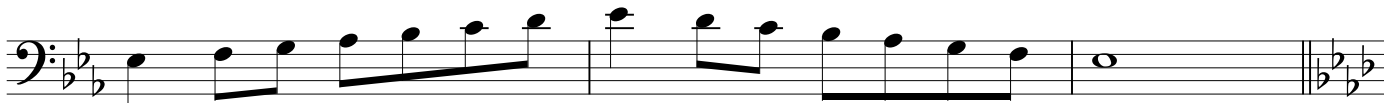
F Major (1 flat)



Bb Major (2 flats)



Eb Major (3 flats)



Ab Major (4 flats)



Db Major (5 flats)



Gb Major (6 flats)



F# Major (6 sharps) - enharmonic of Gb (same sound)



B Major (5 sharps)



E Major (4 sharps)

Musical notation for E Major (4 sharps) in bass clef. The scale is written in a single octave, starting on E2 and ending on E3. The key signature has four sharps (F#, C#, G#, D#). The notation includes a repeat sign at the end.

A Major (3 sharps)

Musical notation for A Major (3 sharps) in bass clef. The scale is written in a single octave, starting on A2 and ending on A3. The key signature has three sharps (F#, C#, G#). The notation includes a repeat sign at the end.

D Major (2 sharps)

Musical notation for D Major (2 sharps) in bass clef. The scale is written in a single octave, starting on D2 and ending on D3. The key signature has two sharps (F#, C#). The notation includes a repeat sign at the end.

G Major (1 sharp)

Musical notation for G Major (1 sharp) in bass clef. The scale is written in a single octave, starting on G2 and ending on G3. The key signature has one sharp (F#). The notation includes a repeat sign at the end.

How to play 2 octaves (this one is F Major, but you can learn the others too):

Musical notation for F Major (2 octaves) in bass clef. The scale is written in two octaves, starting on F2 and ending on F4. The key signature has two flats (Bb, Eb). The notation includes a repeat sign at the end.

Chromatic Scale - one octave down, then up

Musical notation for a chromatic scale in bass clef, one octave down then up. The scale starts on G3, goes down to G2, and then back up to G3. The notation includes a 3/4 time signature and a repeat sign at the end.

Chromatic Scale - All-District Range

Musical notation for a chromatic scale in bass clef, all-district range. The scale starts on G3 and goes up to G4. The notation includes a 3/4 time signature and a repeat sign at the end.

Musical notation for a chromatic scale in bass clef, all-district range (continued). The scale starts on G4 and goes down to G3. The notation includes a 3/4 time signature and a repeat sign at the end.

Empty musical notation for bass clef, consisting of two staves.