



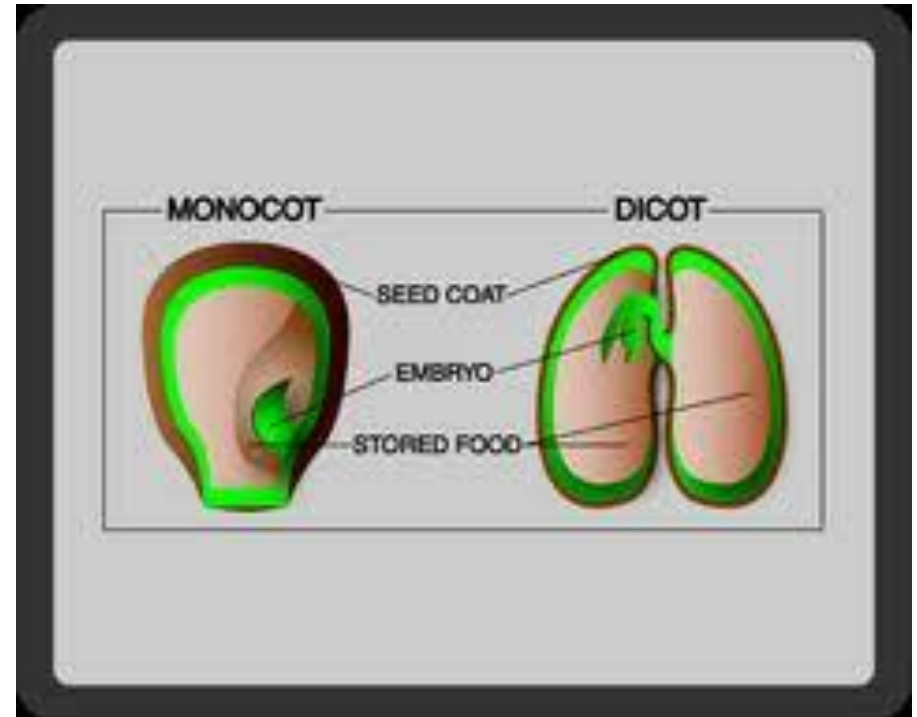
# SEEDS

## Gymnosperms and Angiosperms



# SEEDS

- Plant seeds consist of an embryo which is surrounded by a special seed coat called a **testa**.
- The seed develops from the zygote formed when one of the **2** sperm nuclei in the pollen tube fertilizes the egg in the ovule.

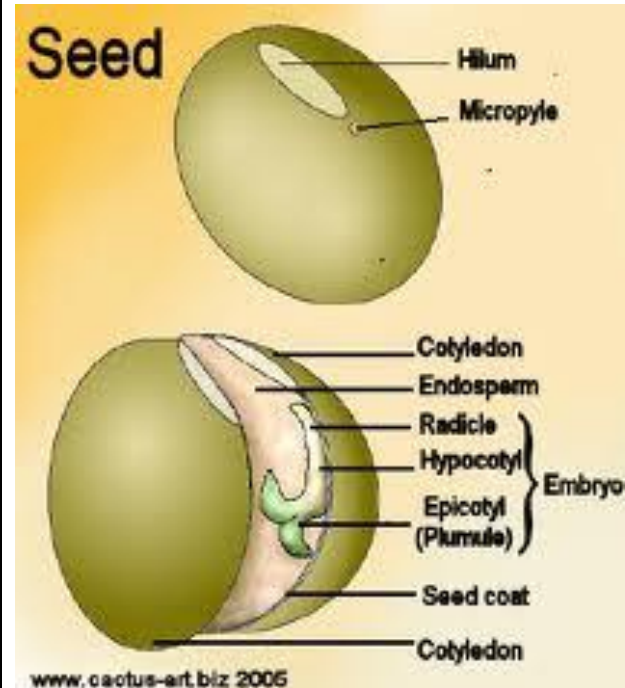


- When conditions are right, the seed grows or germinates.
- The first part to emerge is the root which breaks through the testa.
- The next part to emerge is the shoot / stem

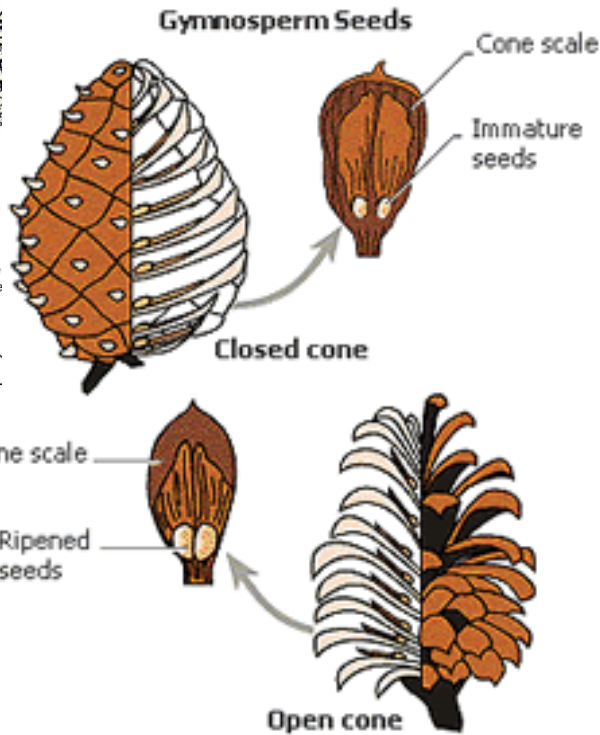
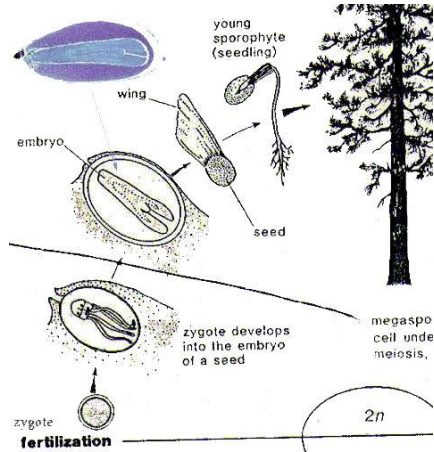


# The parts of the seed:

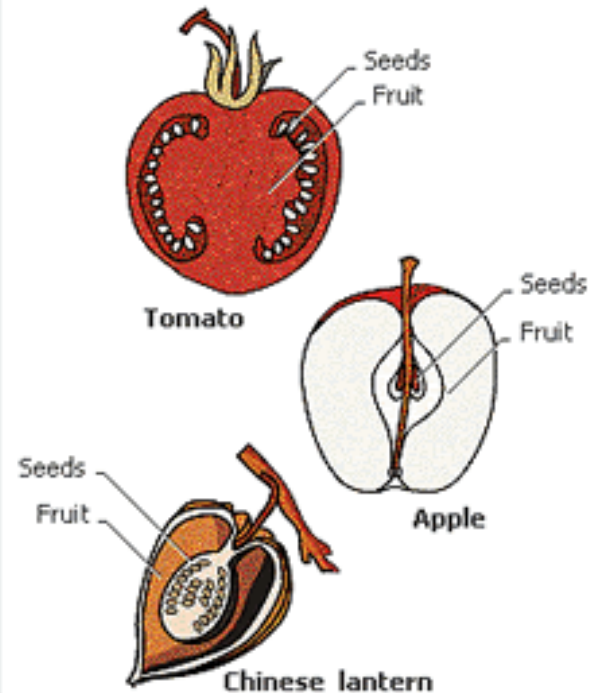
SEED PART	MATURES INTO ADULT PART CALLED THE:
Radicle	Root
Epicotyl	Leaf bud
Hypocotyl	Stem
Plumules	Leaf/Leaves



# Gymnosperm vs Angiosperm Seed



## Angiosperm Seeds and Fruits

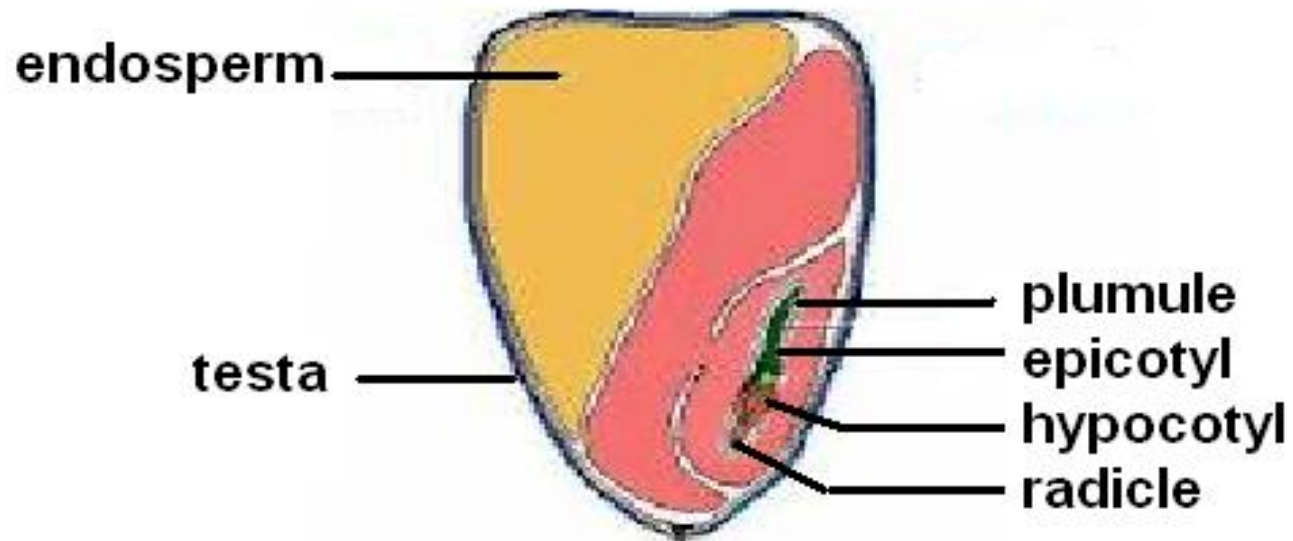


### Angiosperms and gymnosperms

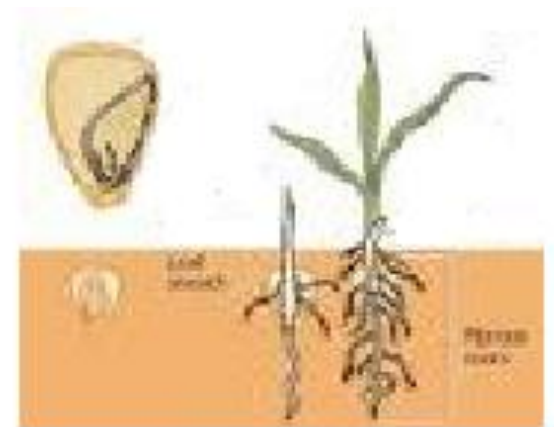
Image src: <http://images.encyclopedia.msn.com/xrefmedia/aencmed/targets/illus/ilt/T628970A.gif>

# Monocot seed

Example: Corn seed

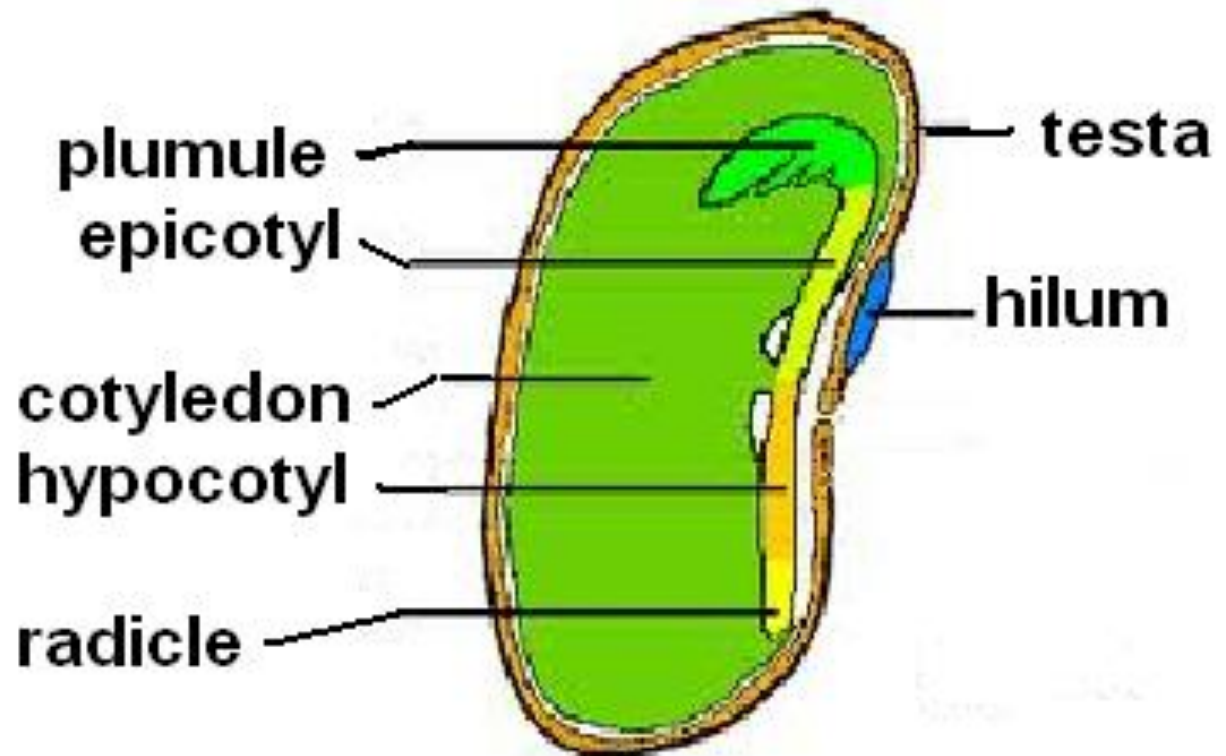


# Germinating monocot seed



# Dicot seed

Example: Bean seed





# Germinating dicot seed

