

SEGMENTED WORMS

Phylum Annelida

Ex. Earthworms, leeches,
polychaete (marine) worms

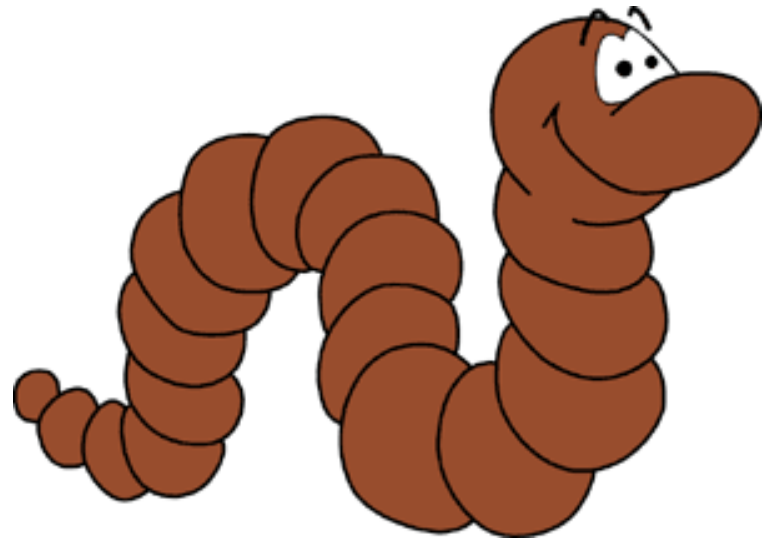


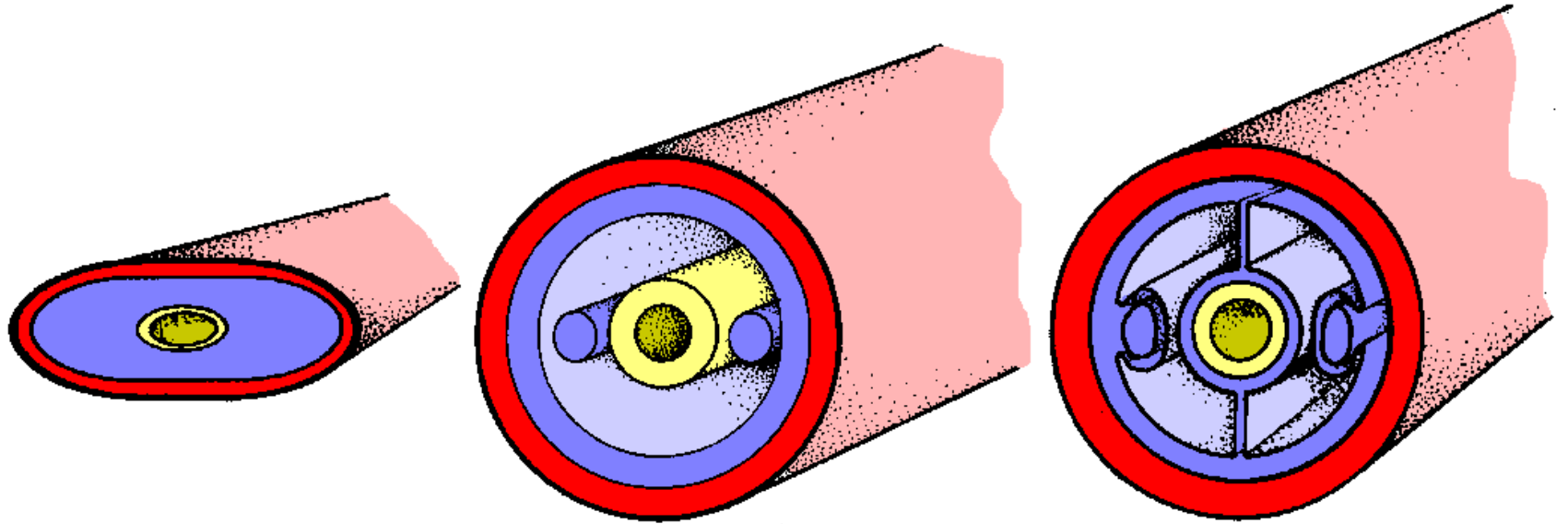
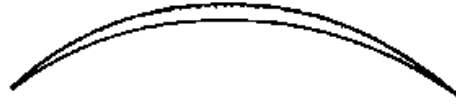
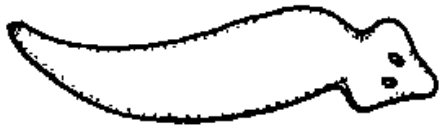
ARKive

© Steve Hopkin / ARDEA LONDON

Characteristics of Phylum Annelida

- Body type: bilateral
- Ecological role:
 - Parasitic
 - Food source
 - Aerate soil
 - Breakdown material
- Body organization:
3 layers – endoderm, mesoderm, ectoderm
- Body cavity: coelom
(first)



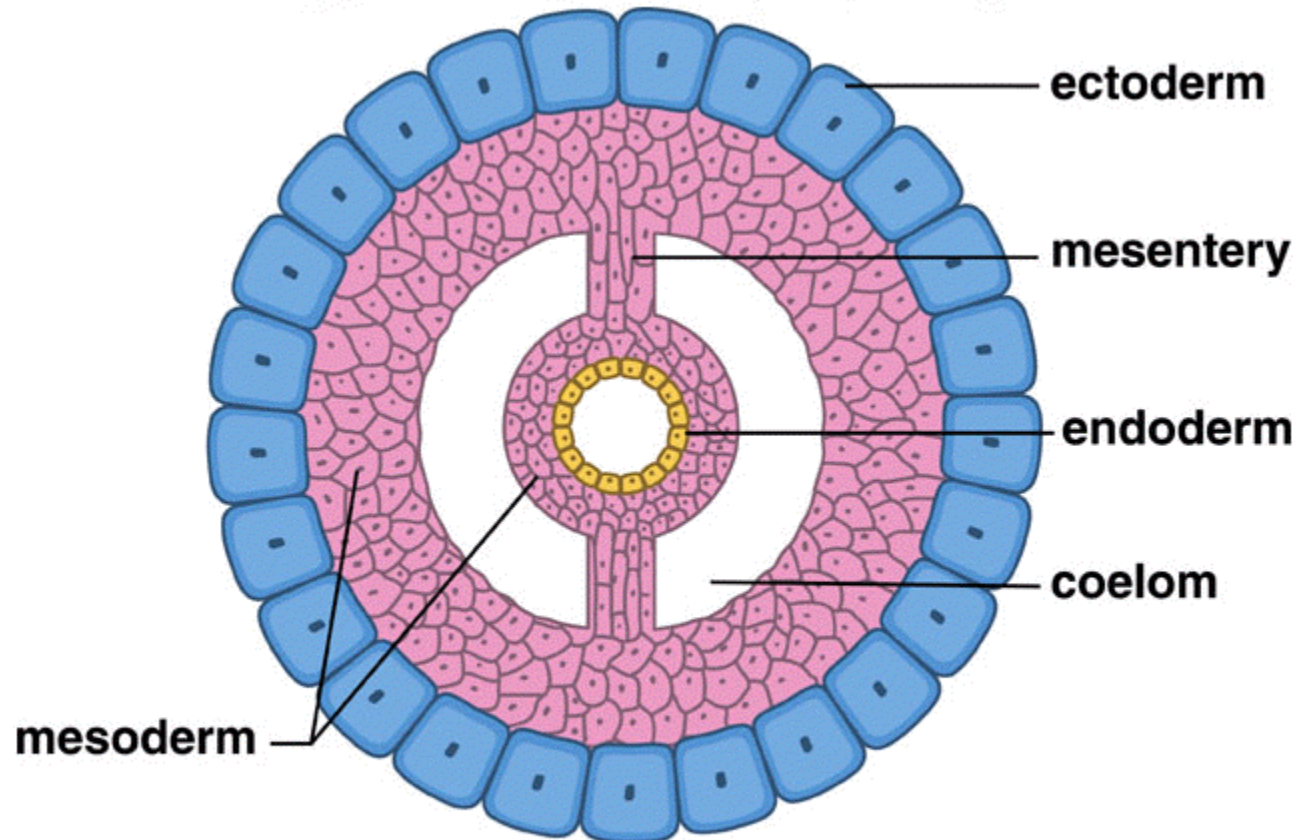


Livingstone © BIODIDAC

9/94

Coelom

Copyright © The McGraw-Hill Companies, Inc. Permission required for reproduction or display.



**c. Coelomate molluscs annelids arthropods
echinoderms chordates**

Characteristics continued:

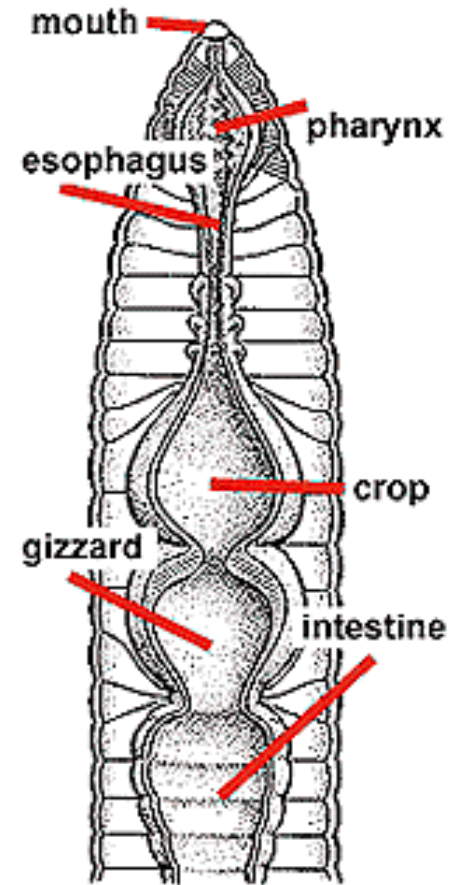
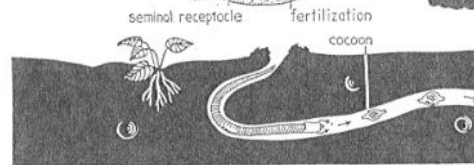
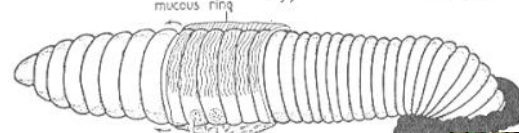
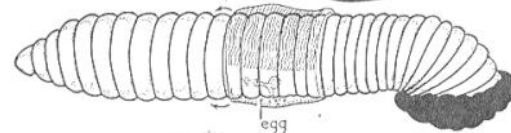
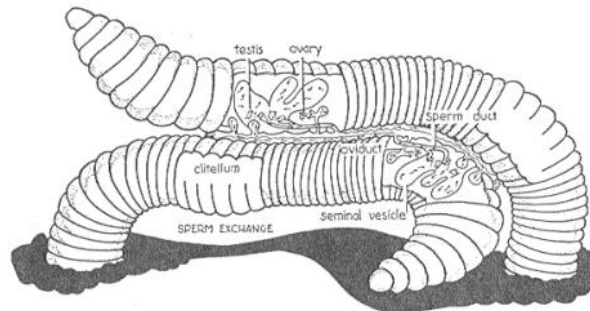
- Digestive system: **complete** with mouth & anus. Special organs

- Reproduction:

- Sexual:

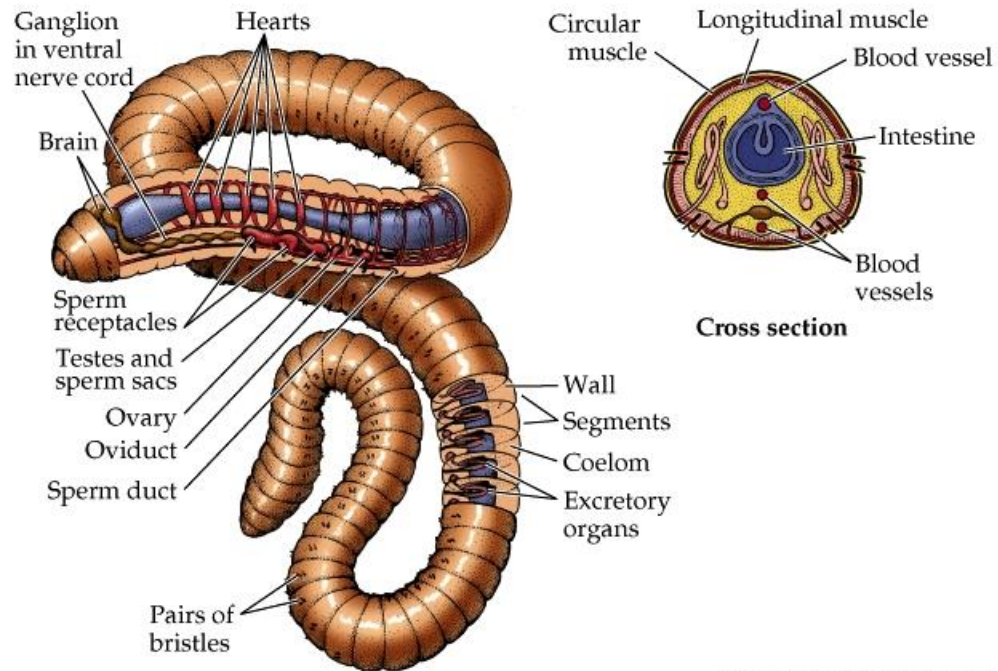
Hermaphroditic
with cross
fertilization

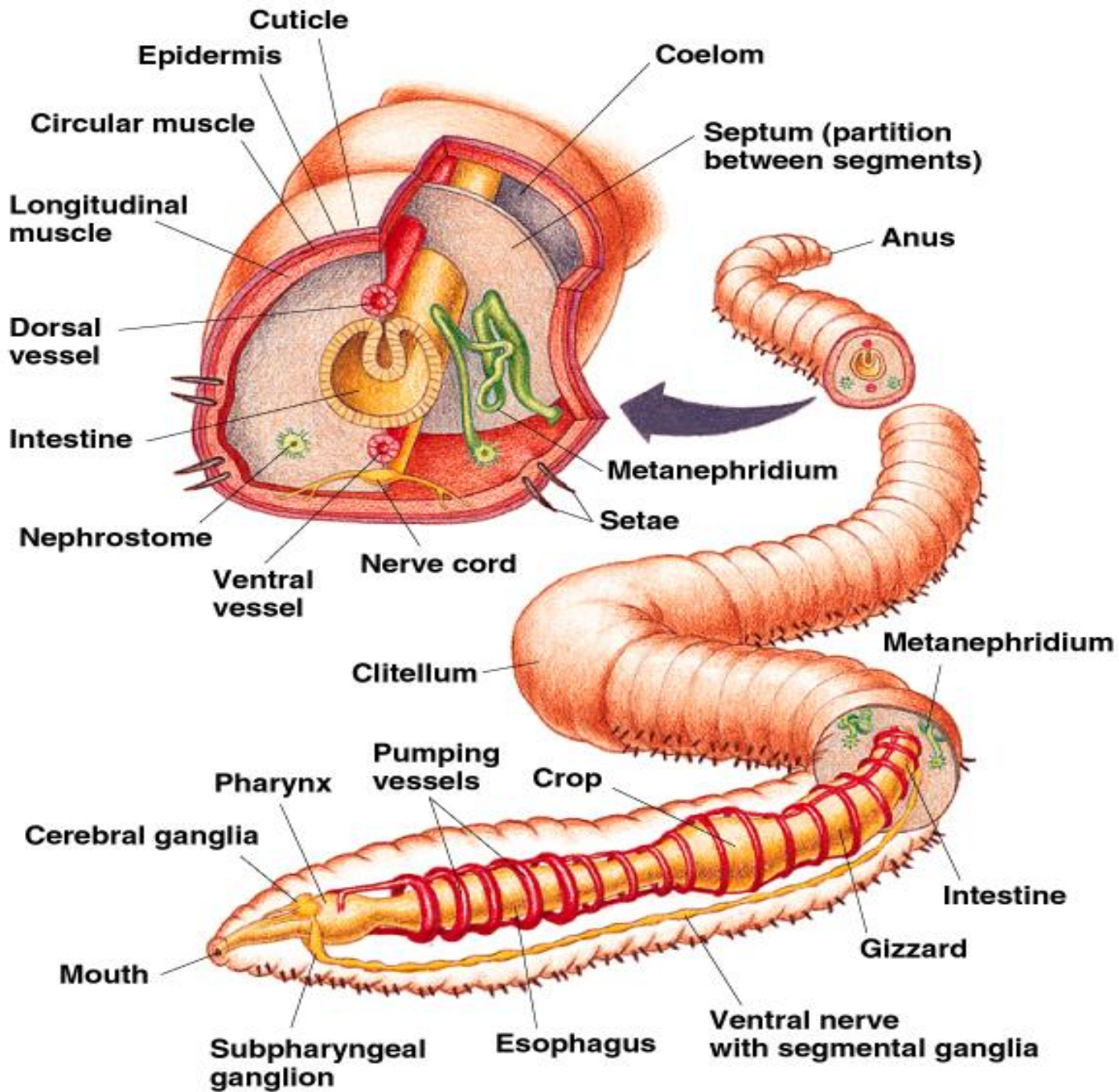
- Asexual: NONE

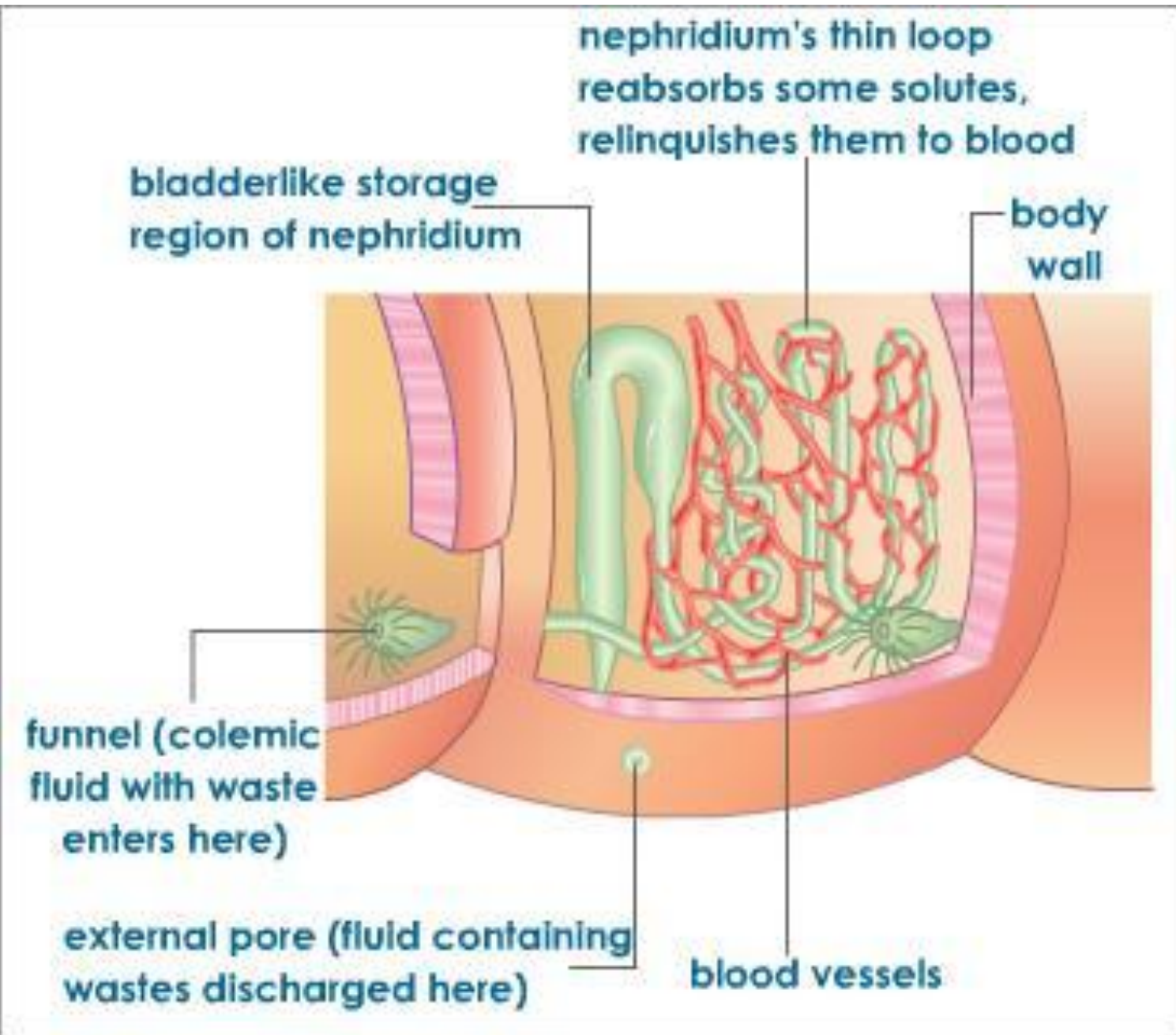


Characteristics continued:

- Circulation: blood, blood vessels & aortic arches = **closed** (first)
- Nervous system: brain, ganglion, nerves, sensory organs
- Respiration: pharynx or gills
- Excretion: nephridia, anus, tubes
- Habitat: host (external), soil, water



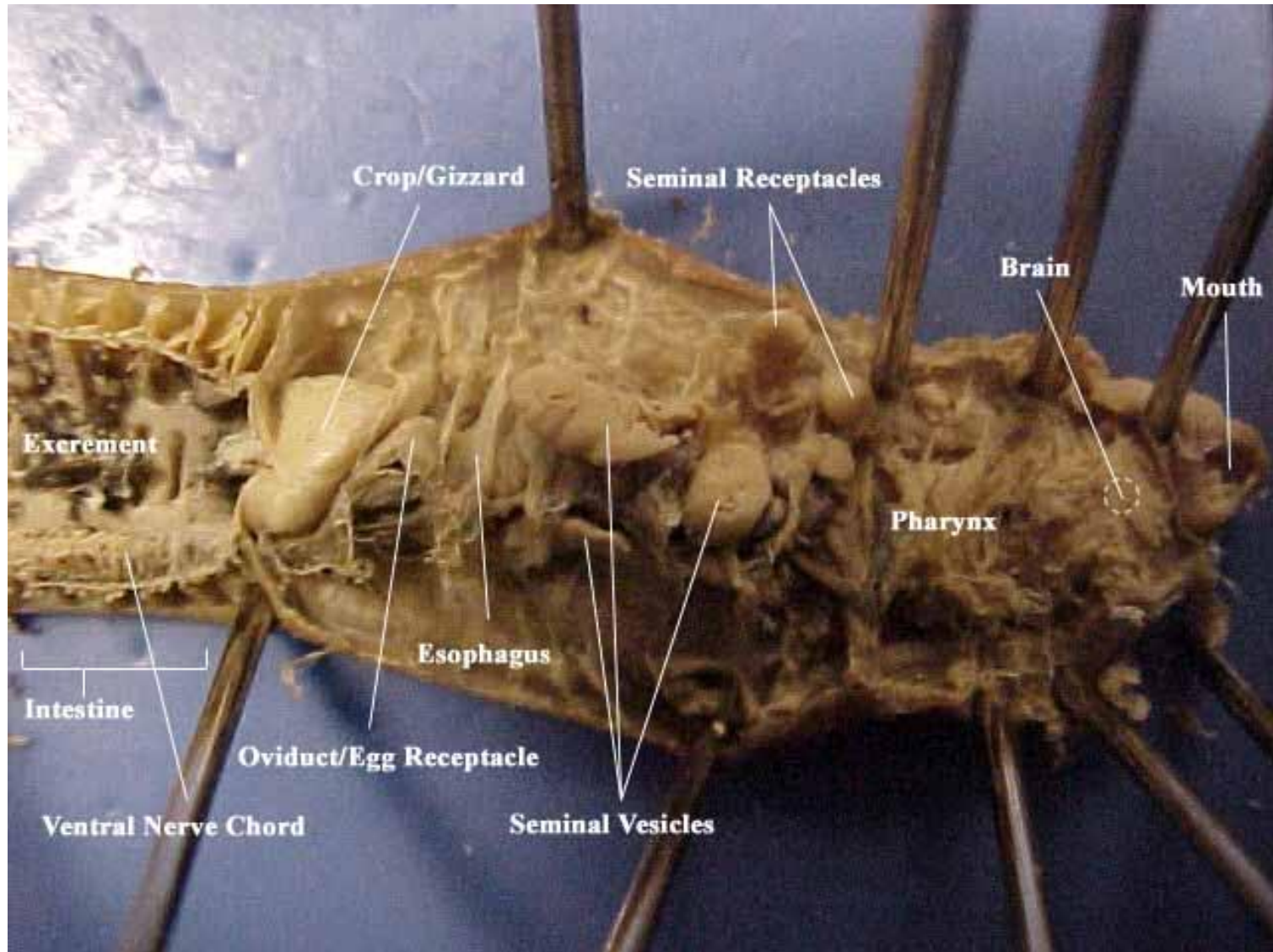




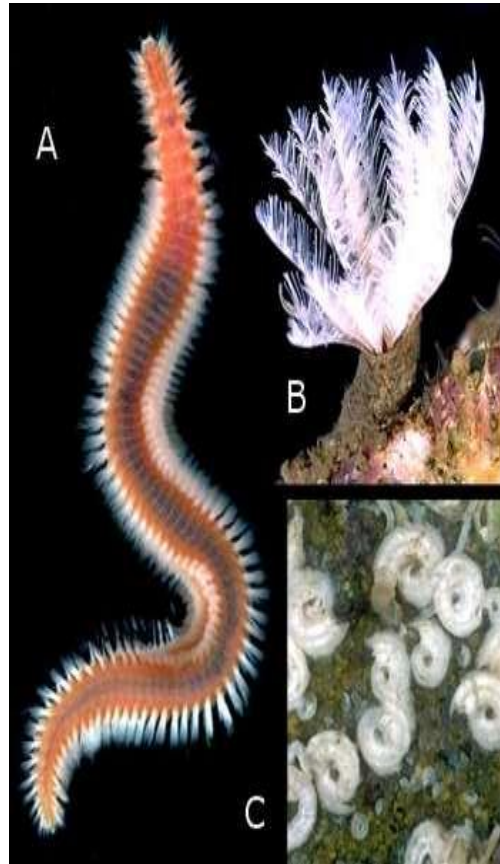
3 classes:

- Oligochaeta – Earthworm
 - Polychaeta – Marine worm
 - Hirudinea – Leech
-
- Free living – earthworm & marine worm
 - Parasitic - leech

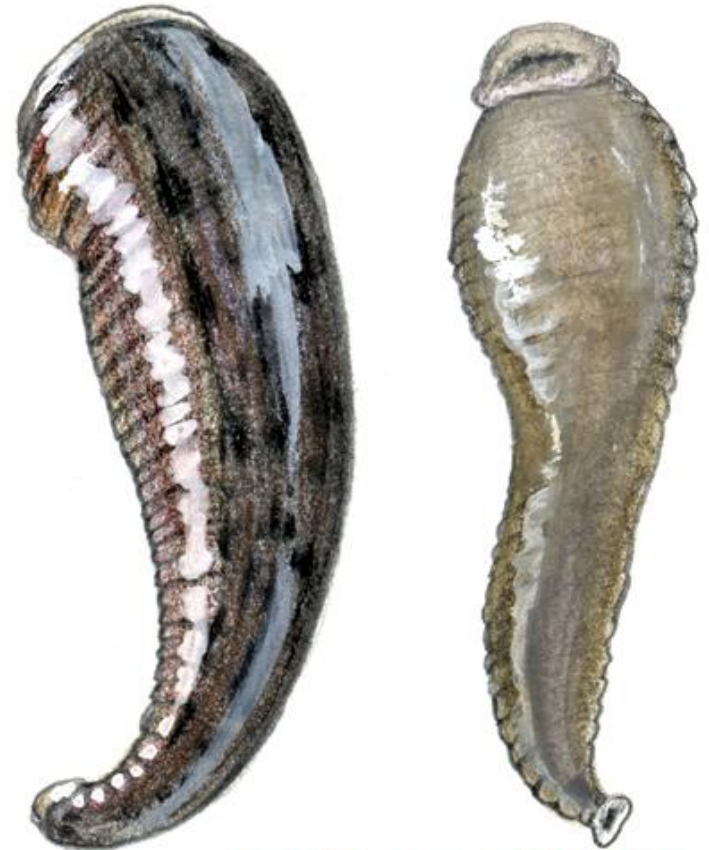
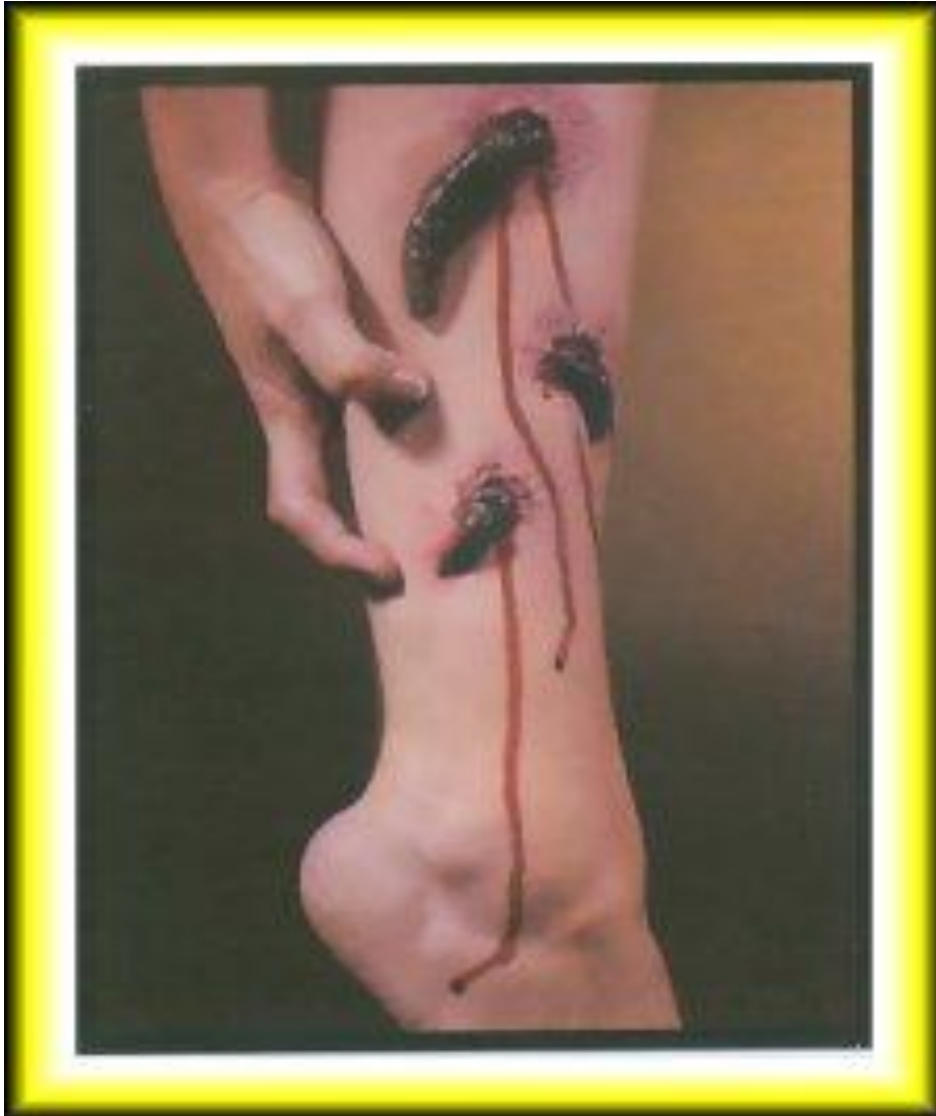
Class Oligochaeta



Class Polychaeta



Class Hirudinea (leeches)



Gina Mikel, www.scientificillustrator.com