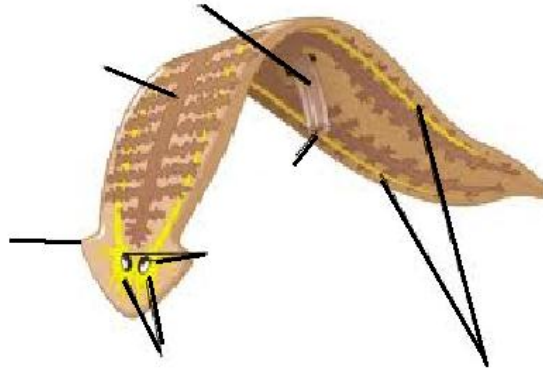


PHYLUM PLATYHELMINTHES

Using Miller and Levine textbook as a resource pp. 570-575, answer the following questions.

1. Label the auricles (pointy extensions on the side of the head), eyespot, gastrovascular cavity, pharynx, mouth, brain, nerve cord, anterior (head) end and posterior (tail) end on the following diagram of a Planaria.



2. The auricles are used to detect sound vibrations. What is the function of the pharynx, eyespots, and flame cells?
3. Describe what you would observe if:
 - a) You cut it in half lengthwise
 - b) You cut it in to thirds across
 - c) What kind of reproduction is this?
4. Explain the life cycle of a tapeworm. Include cuticle/tegument, scolex, long flat body, cysts, proglottids, hermaphroditic, intermediate host in your explanation.
5. What do you think makes a parasite successful?