

Phylum Mollusca

Classification System

4 classes

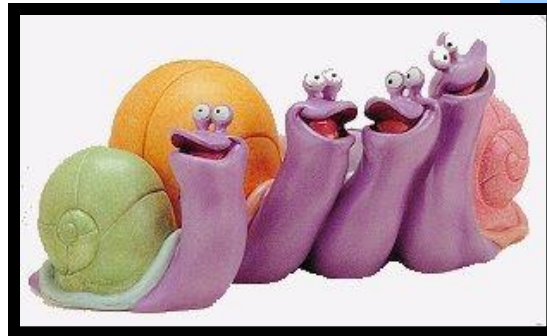
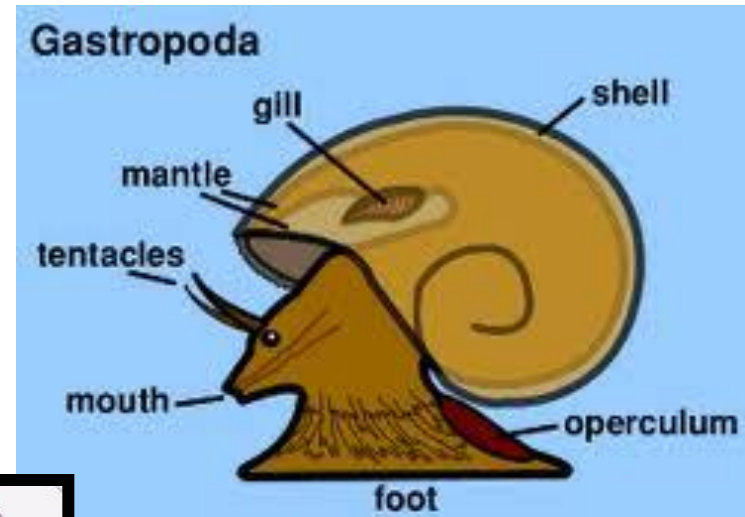


Class Gastropoda



Class Gastropoda: ex. Slug, snail

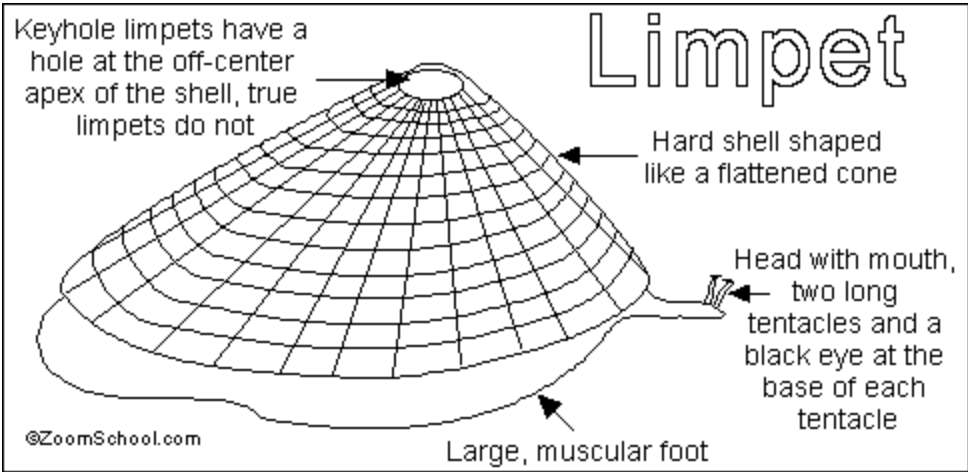
- Feeding: plants & scavenger
- Radula: yes
- Reproduction:
sexual: dioecious or hermaphrodite
- Locomotion: foot
- Circulation: open
- Shell:
 - absent in slug
 - External & coiled in snail
- Other features:
Aquatic & land forms



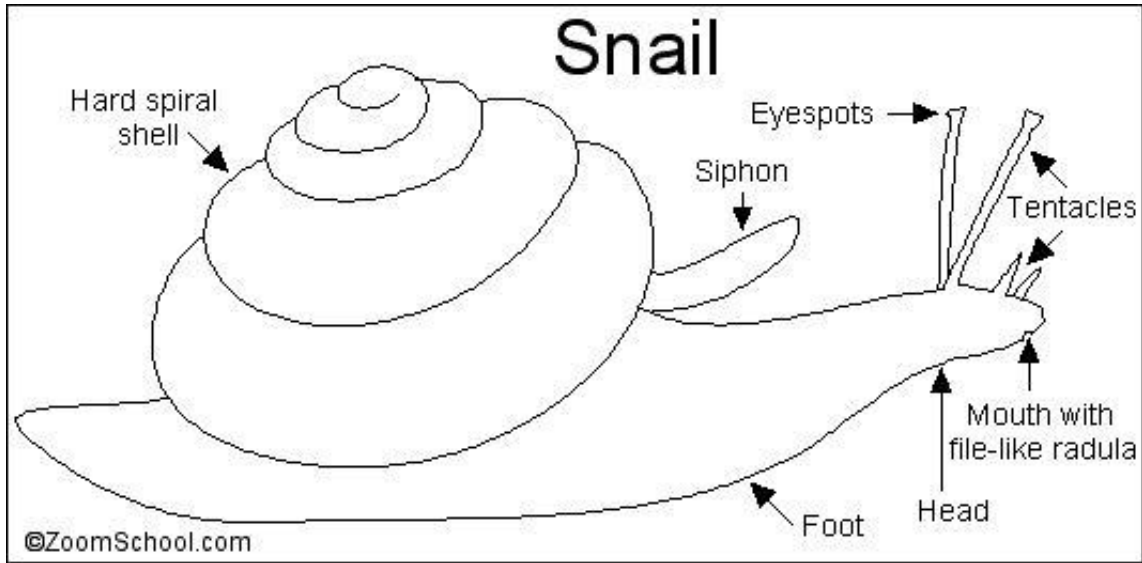
Sea slugs - nudibranchs



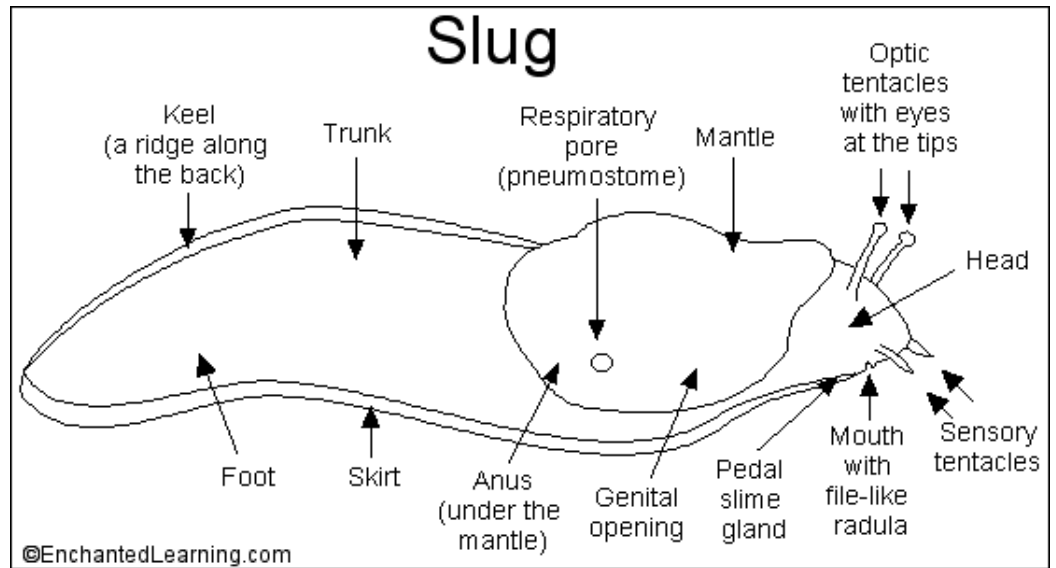
Limpet



Snail

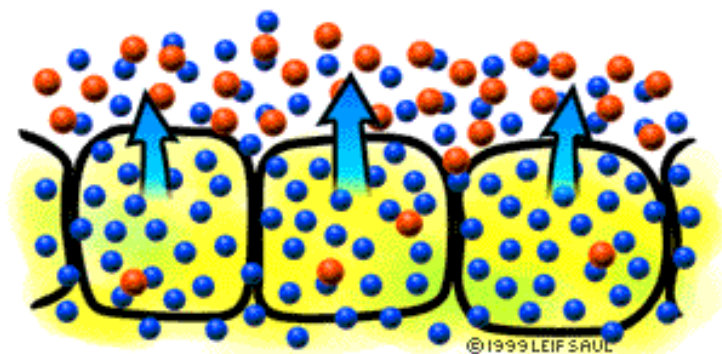
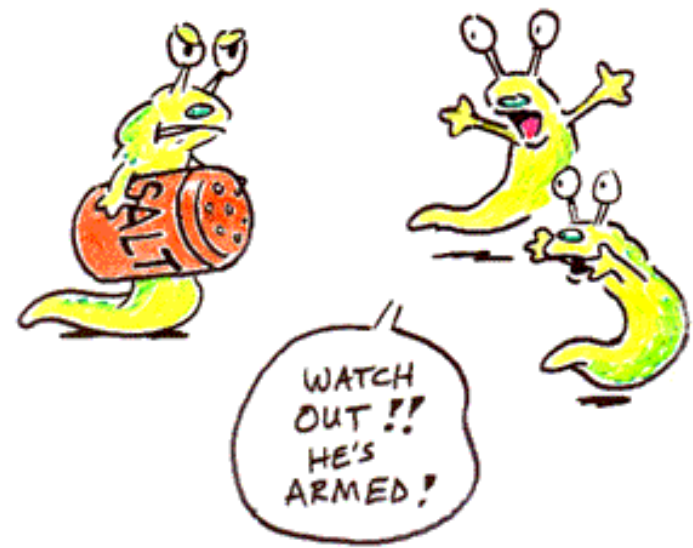


Slug





©1999 JOHN W. PATTON



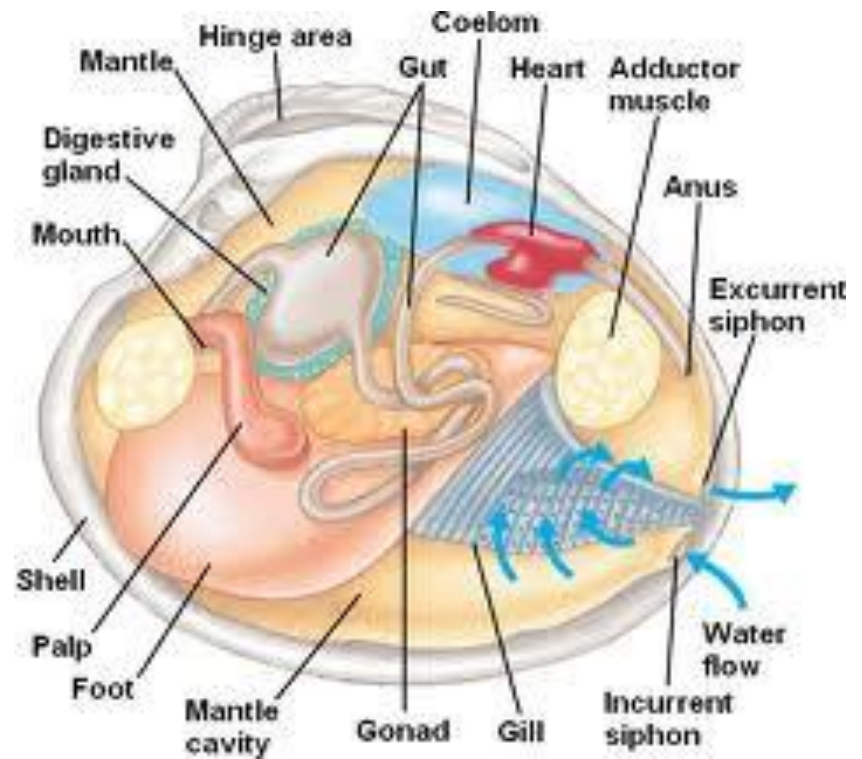
©1999 LEIF SAUL

- **Daring escape!!**



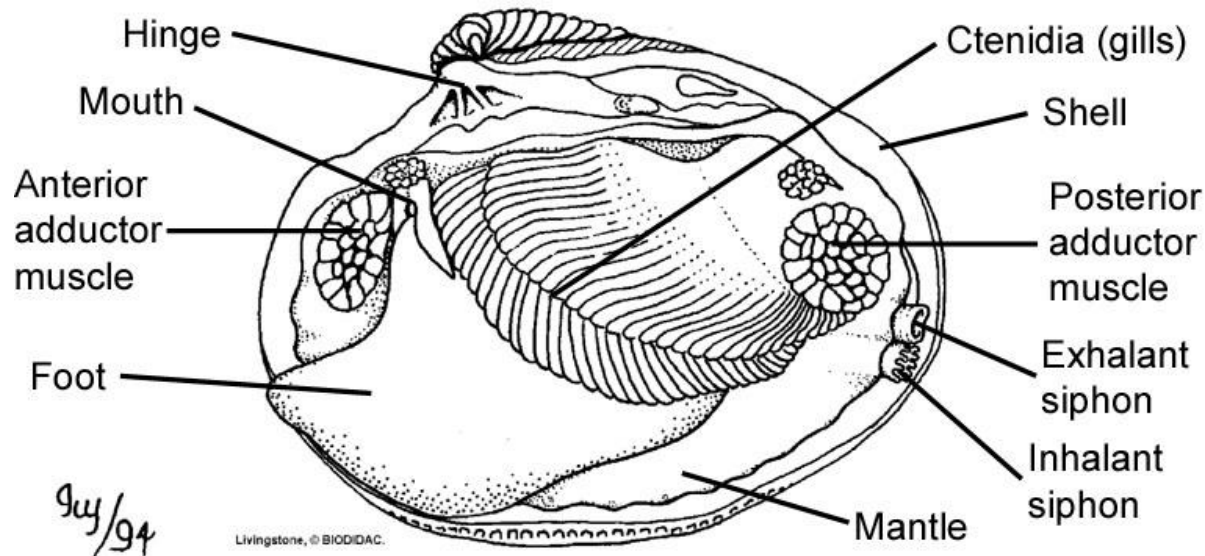


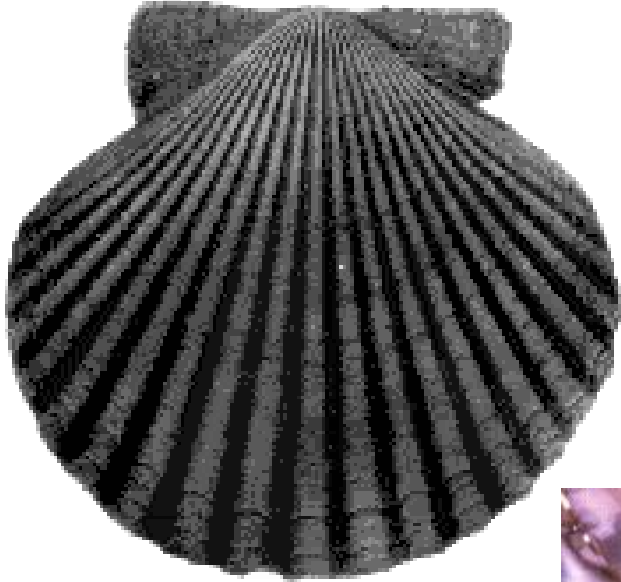
Class Bivalvia



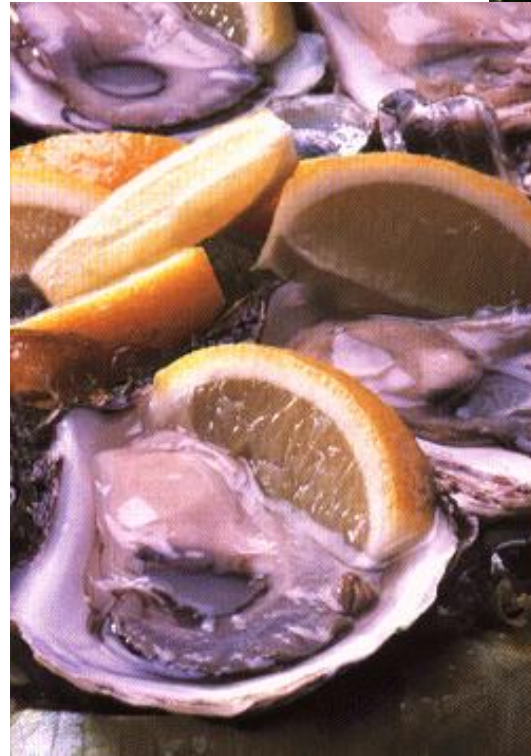
Class Bivalvia: ex. Clam, mussel, oyster, scallop

- Feeding: filter feeder - phytoplankton
- Has radula: no
- Reproduction: sexual: dioecious
- Locomotion: foot
- Circulation: open
- Shell: external, 2 halves
- Other features:
Byssal threads = mass of threads used for attachment to a substrate.

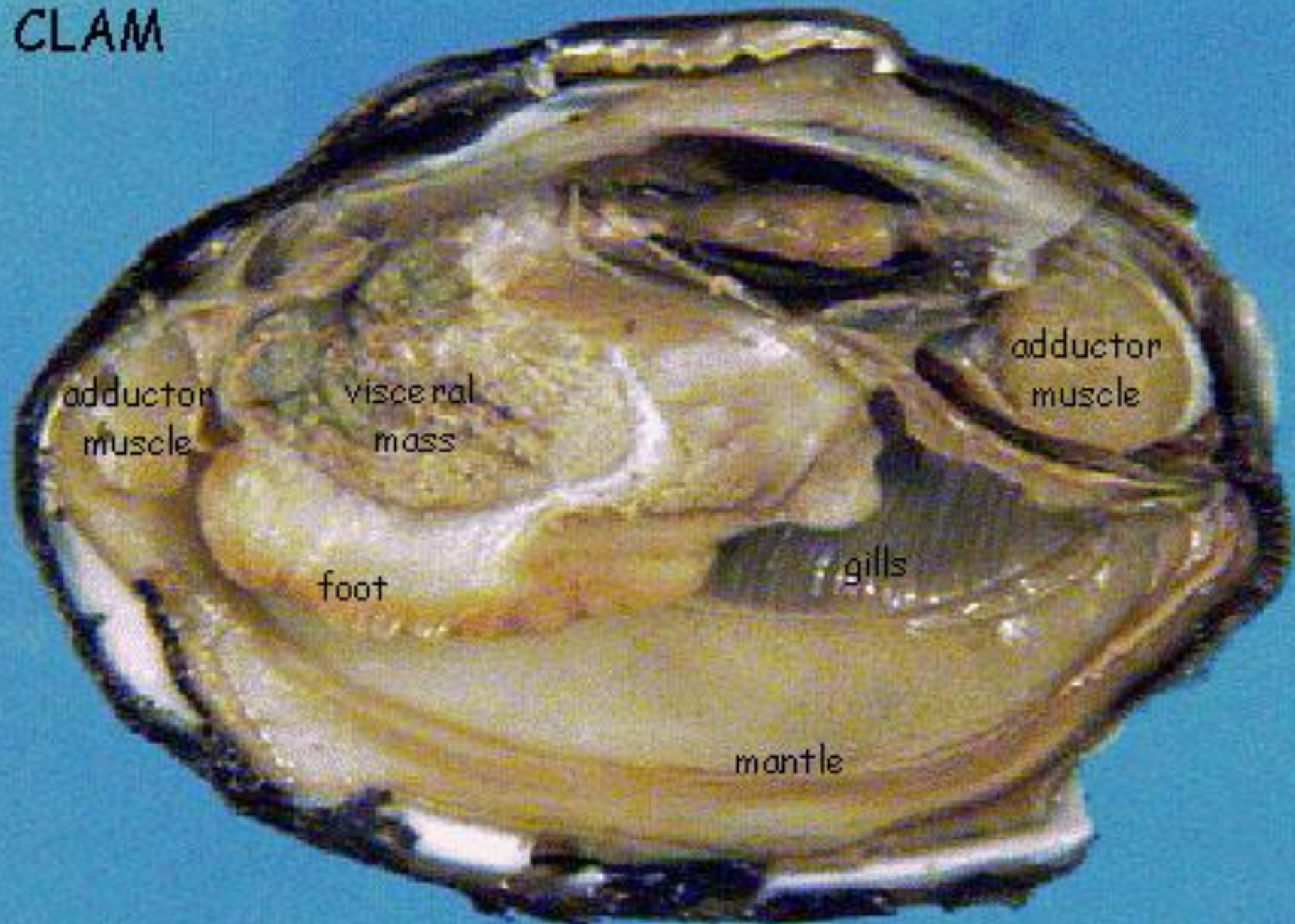




By Reuben Clement's



CLAM



adductor
muscle

visceral
mass

adductor
muscle

foot

gills

mantle

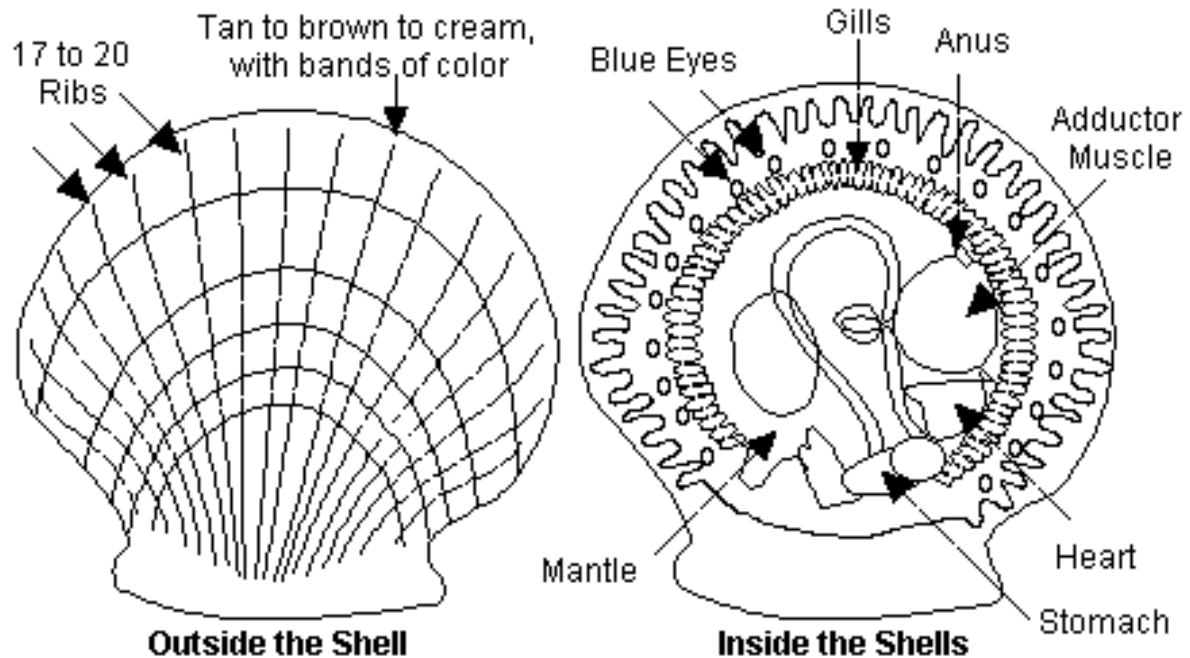
ventral surface



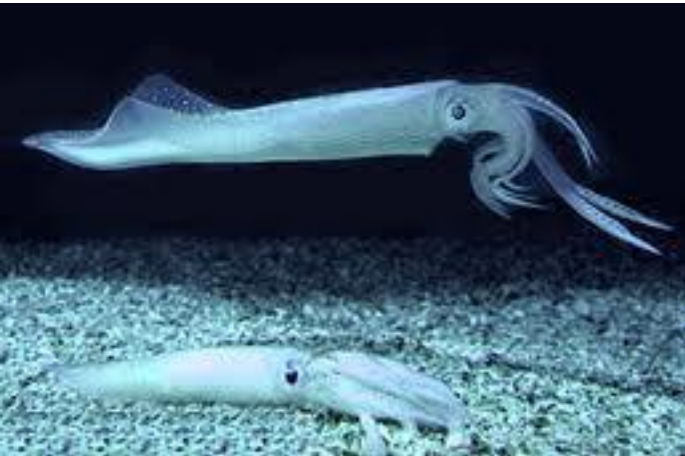


Atlantic Bay Scallop

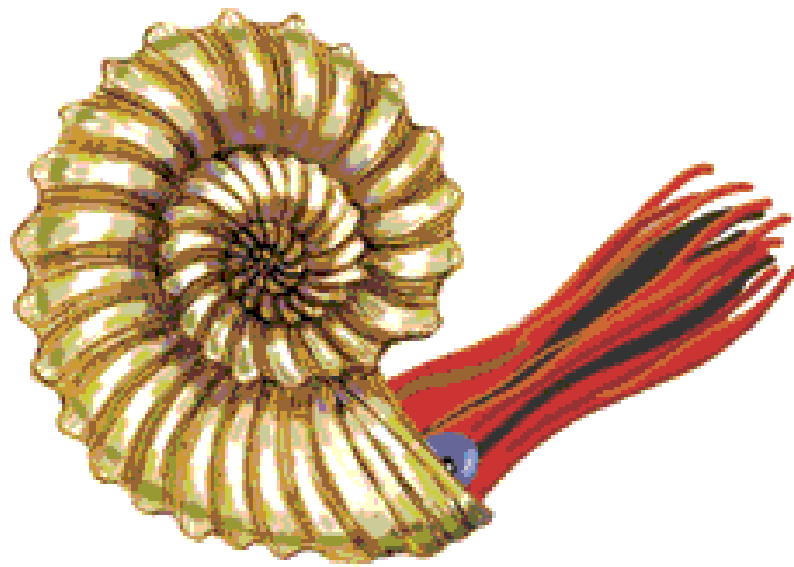
Aequipecten irradians



Class Cephalopoda



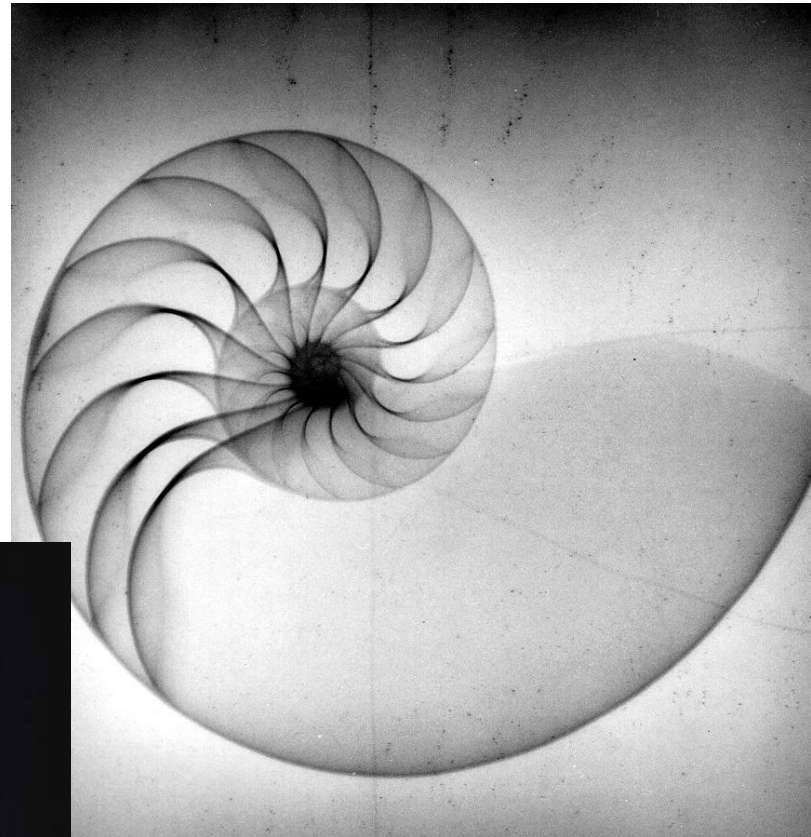
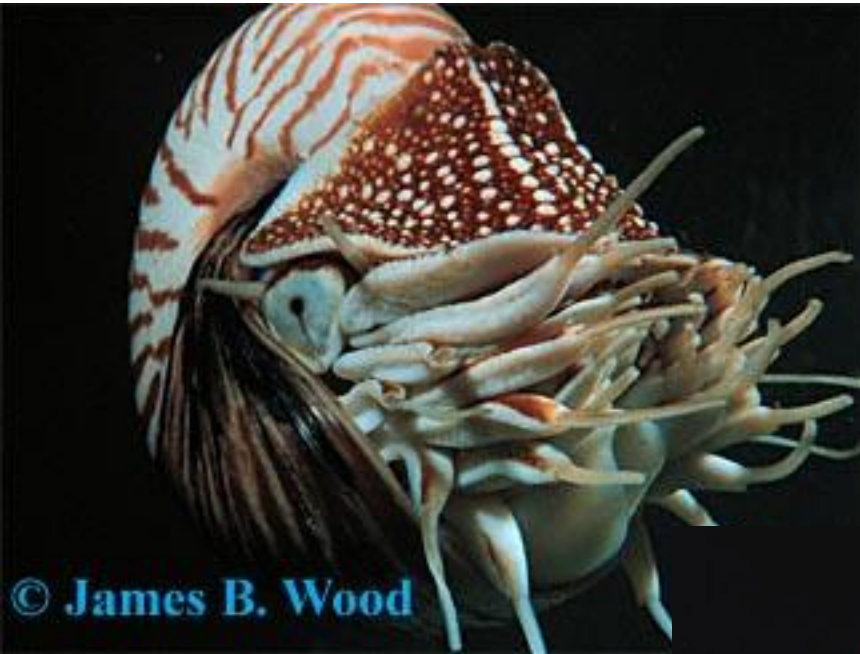
Ancient Ammonites



More ammonite fossils

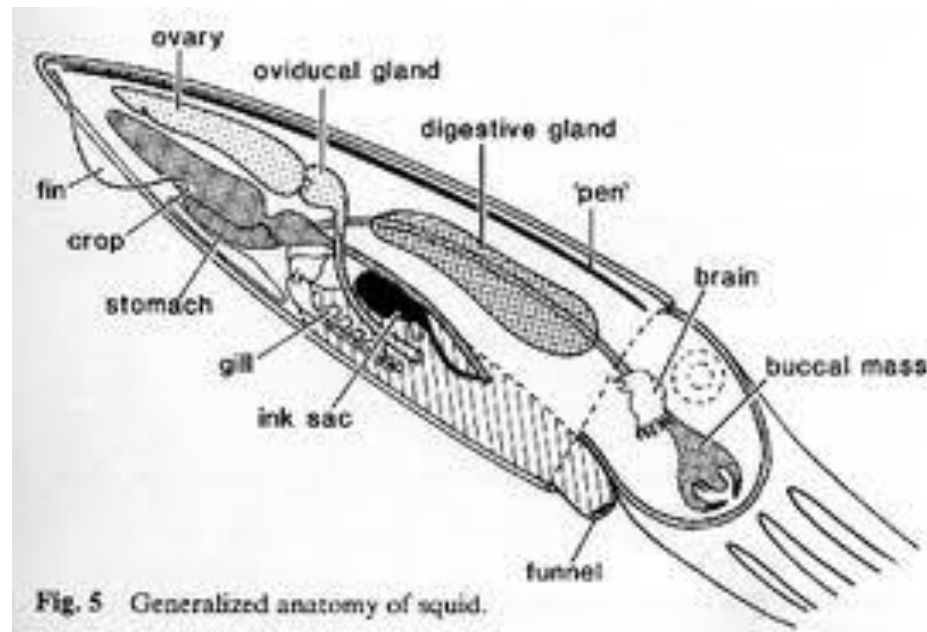


Nautilus = modern day descendent of Ammonites



Class Cephalopoda: ex. Squid, octopus, cuttlefish

- Feeding: catch food with tentacles
- Has radula: yes
- Reproduction:
sexual: dioecious
- Locomotion: jet propulsion or tentacles
- Circulation: closed – very active
- Shell: internal for squid & cuttlefish; none for octopus

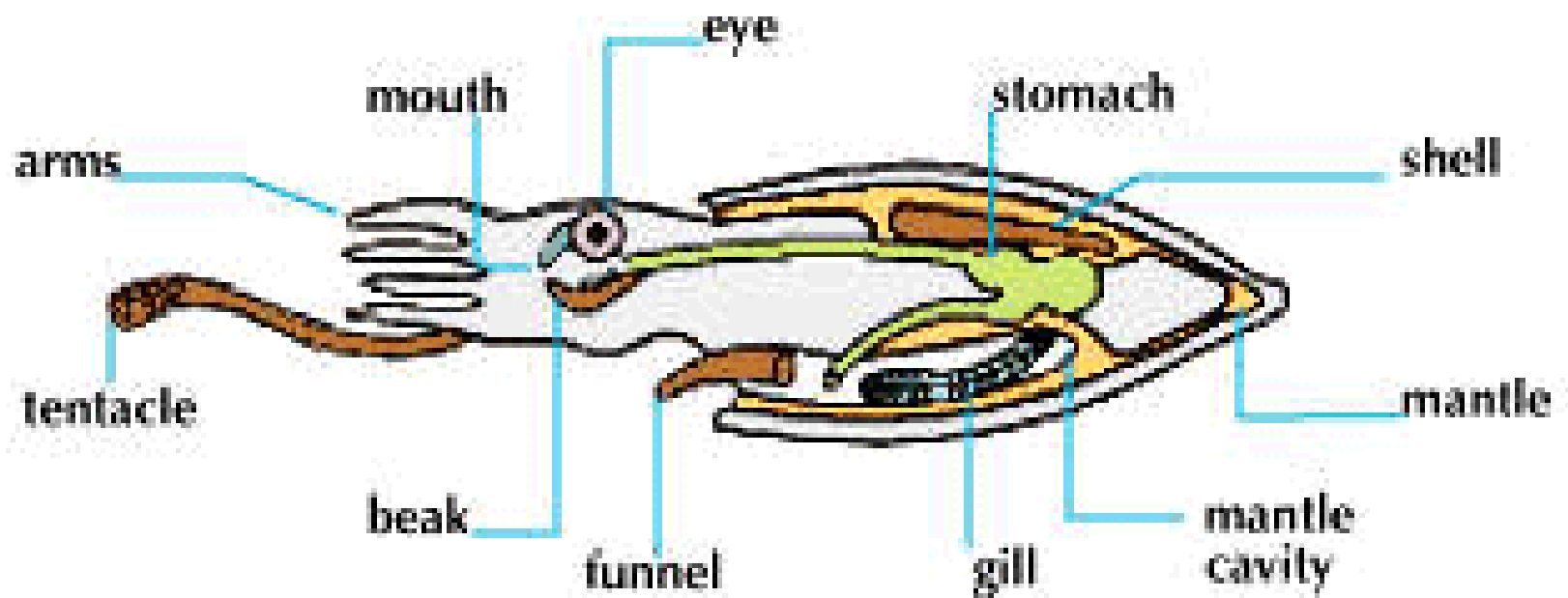


Class Cephalopoda continued:

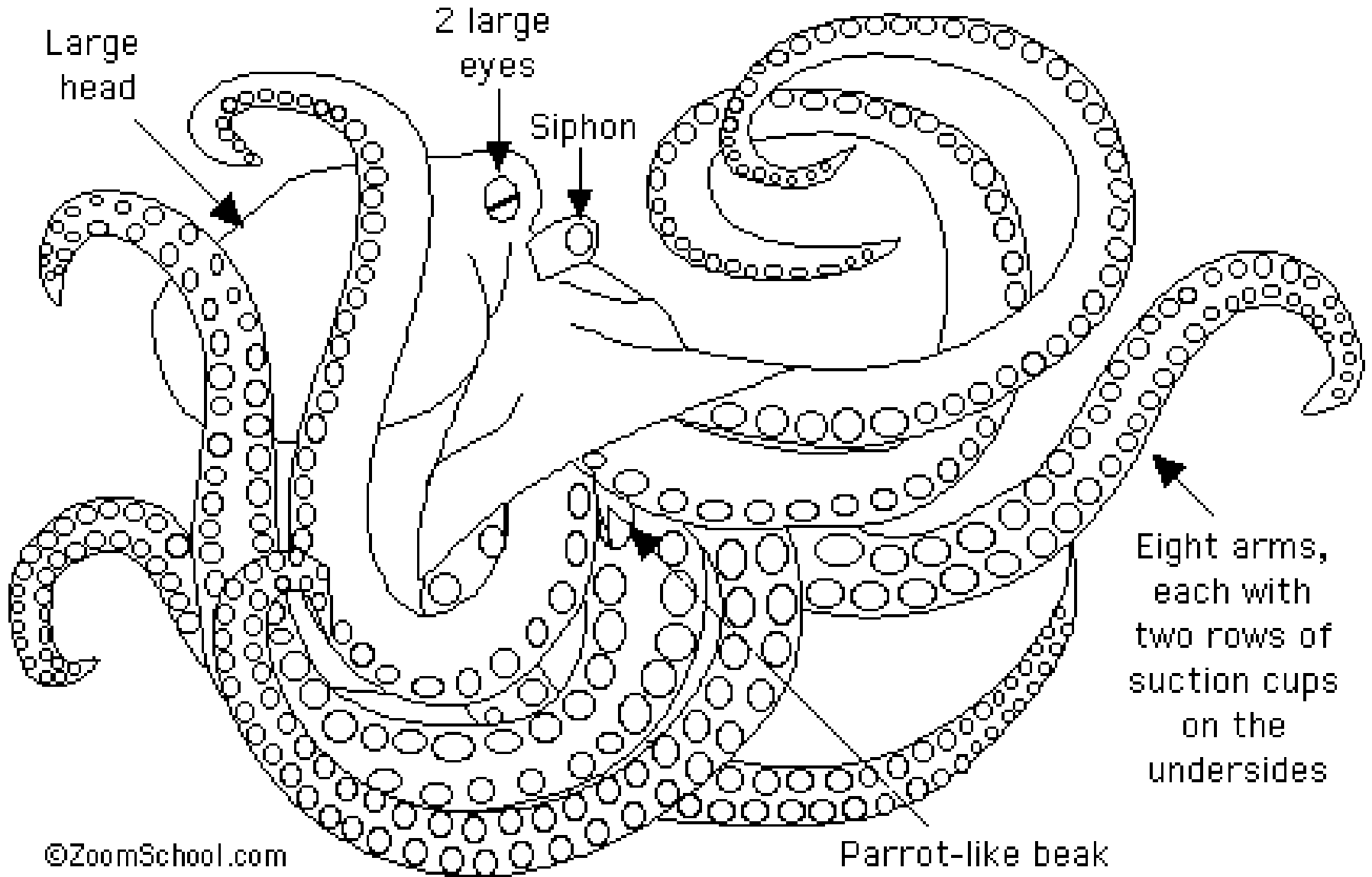
- Other features:
 - Ink sac
 - Suckers on tentacles
 - Large brain, especially the octopus
 - Can change colour
 - Able to regenerate an arm if lost/taken off



CEPHALOPODA



OCTOPUS





Robert Patzner

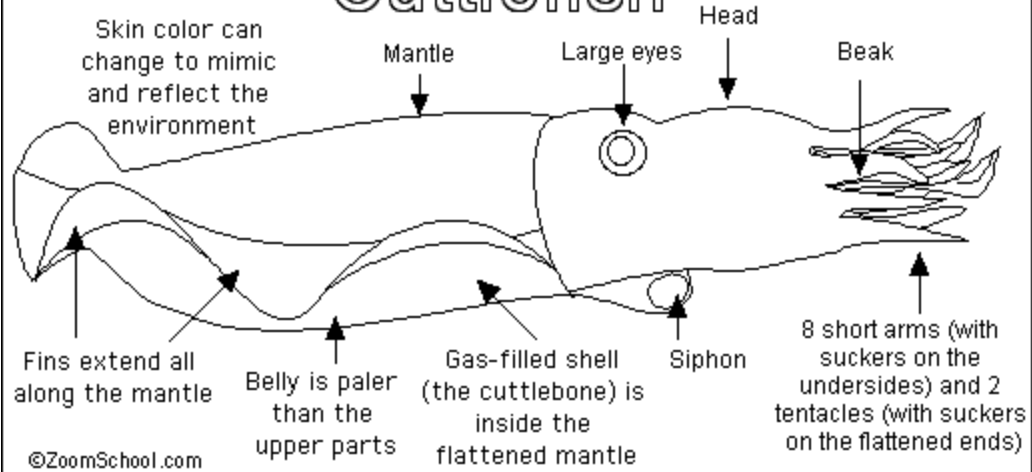


Roy Caldwell

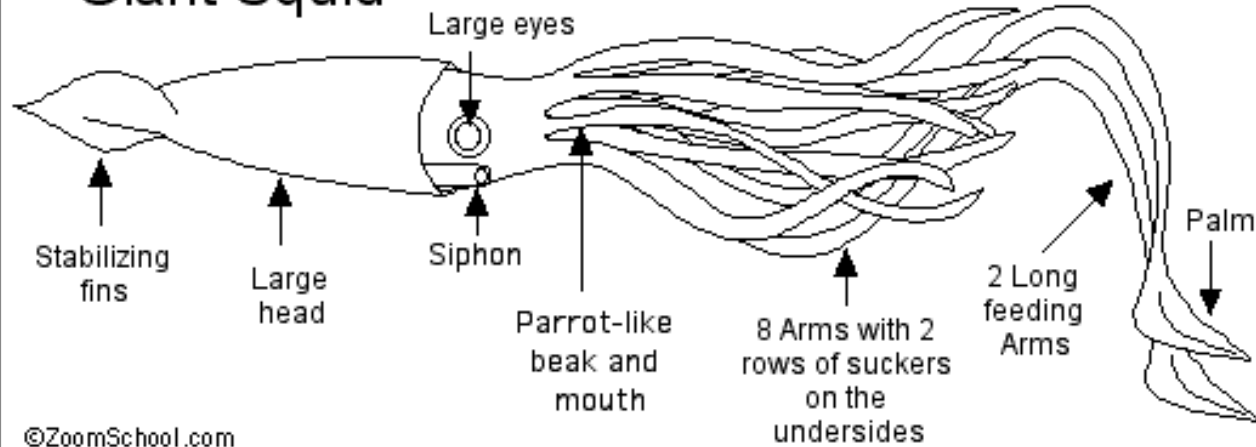


James Wood

Cuttlefish



Giant Squid

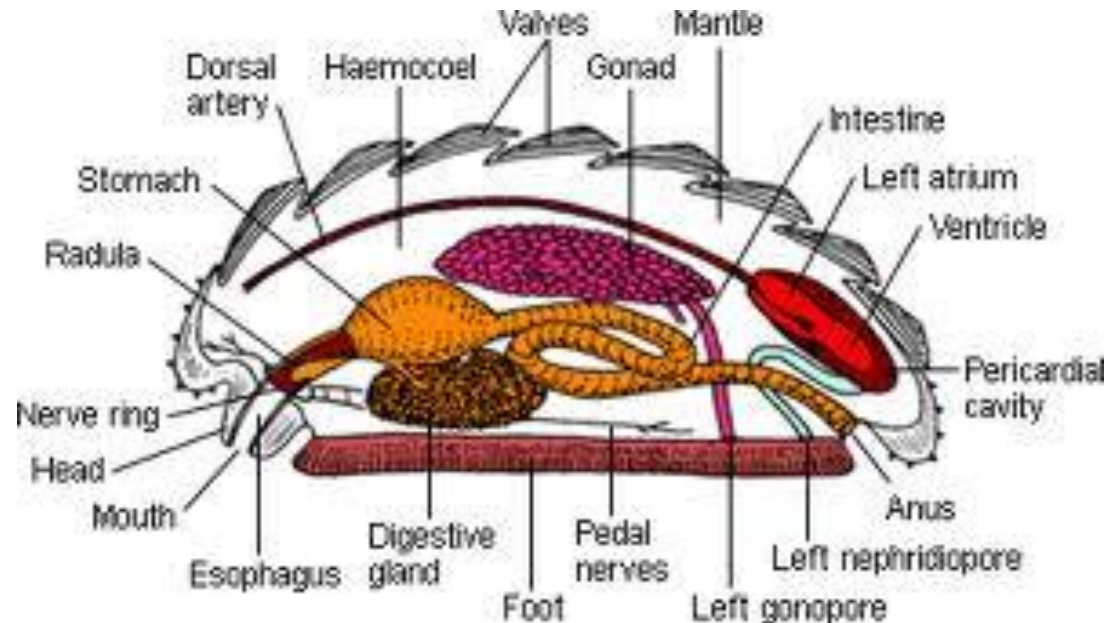
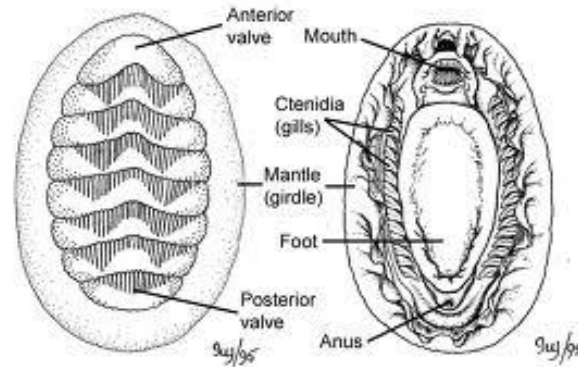
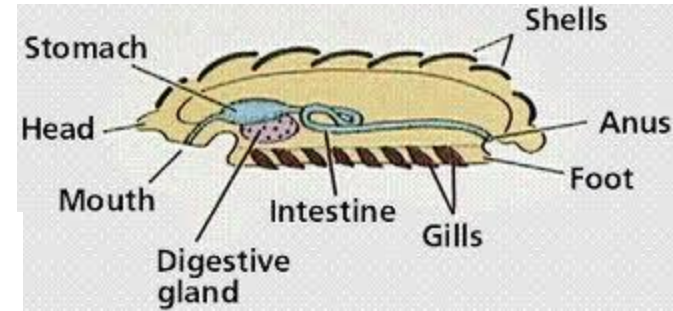


Class Polyplacophora

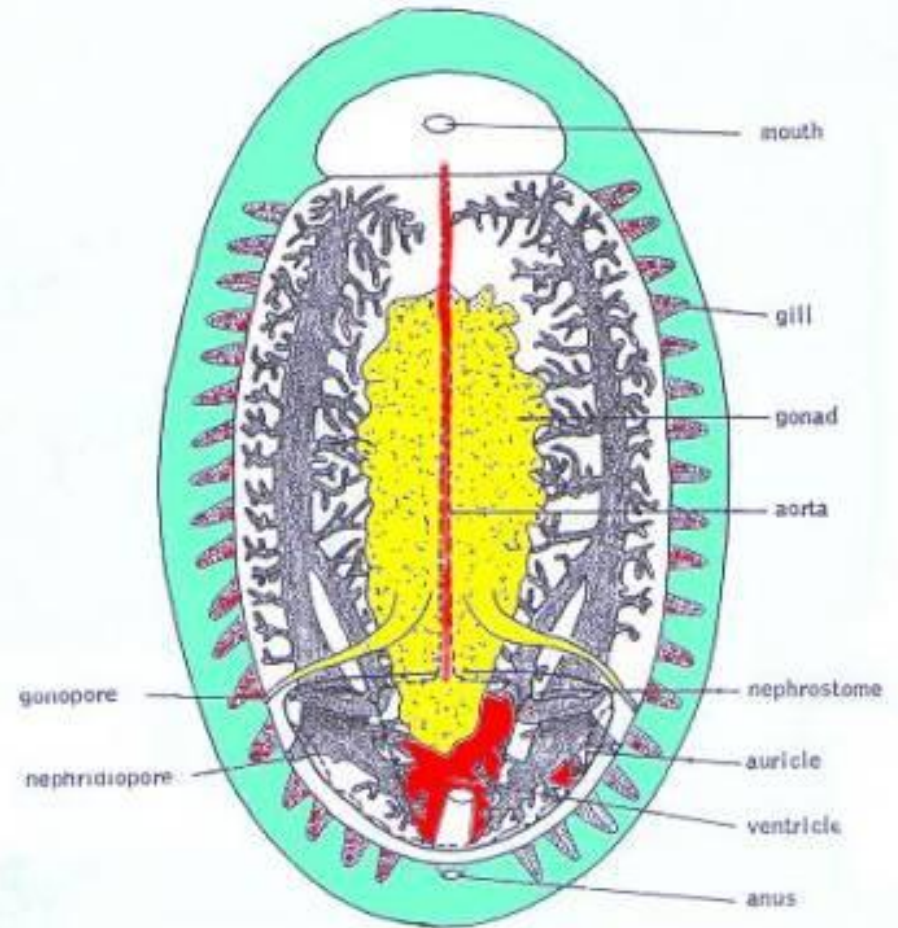
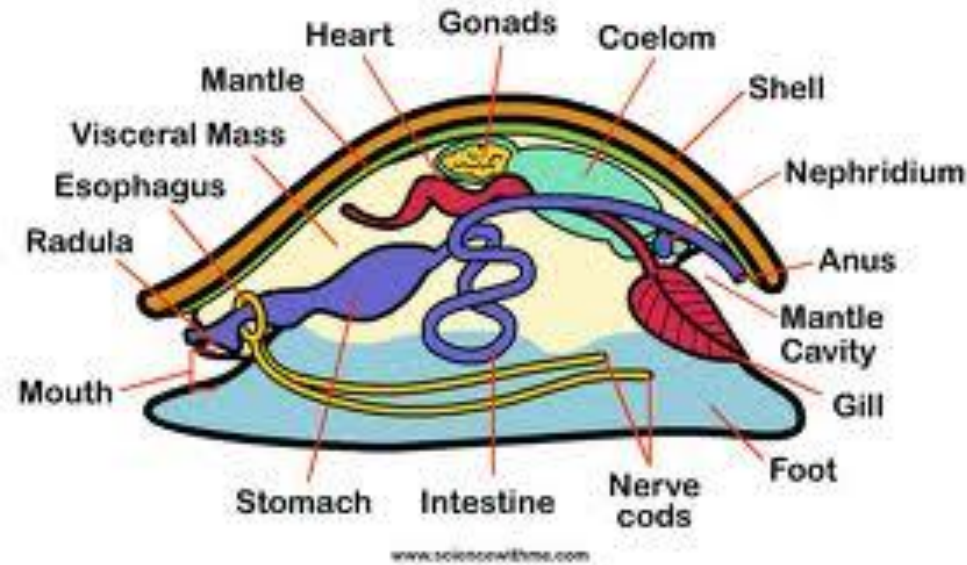


Class Polyplacophora: ex. chitons

- Feeding: scrape algae off rocks
- Has radula: yes
- Reproduction: *sexual*: dioecious
- Locomotion: foot
- Circulation: open
- Shell: external – 8 overlapping shells



Polyplacophora



Gumboot Chiton

