

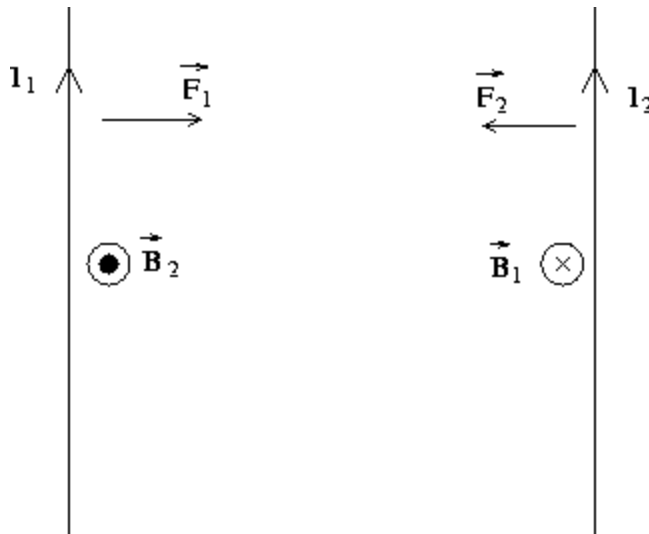
Physics 12 Section 20-6
Force Between Two Parallel Wires

1. The Force between two parallel wire can be calculated if we combine

Remember this is the B field at a distance r from a wire with a current of I flowing through it.

and

This is the force that a wire carrying a current of I feels when it is in a B field.



3. Looking at wire 1

Example: Two wires of a 2.0m long appliance cord are 3.0mm apart and carry a current of 8.0A dc. Calculate the force between these wires.

Do # 19, 20, 21, 22, 28 p 617